



Update tool for DP-DS820 Firmware Ver. 1.08

Firmware Update Procedure

February 26, 2021

Dai Nippon Printing Co., Ltd.

-  After updating to Ver. 1.08, set up the roll paper again and perform "Paper Initialization".
-  While updating, do not disconnect the USB cable or turn the power off. Do not perform any operations such that could result in an error, such as opening the printer cover. Also, do not start or run other software at the same time.

This is an explanation for the DP-DS820 Version Up Tool, to update the printer's firmware Ver. 1.08.

This update tool can be used for the following OS.

Windows XP (32bit),	Windows Vista (32bit),	Windows 7 (32bit/64bit)
Windows 8 (32bit/64bit),	Windows 8.1 (32bit/64bit),	Windows 10 (32bit/64bit)

1. Running DP-DS820 Version Up Tool


To begin with, turn on the printer and connect it to the host computer with the USB cable. Set the paper and ribbon into the printer, close the cover, and make sure there is no error (Printer LED is green).

Run the DP-DS820 Version Up Tool execute file (DP-DS820_0108x86_Direct.exe) for 32bit OS.

Or,

Run the DP-DS820 Version Up Tool execute file (DP-DS820_0108x64_Direct.exe) for 64bit OS.

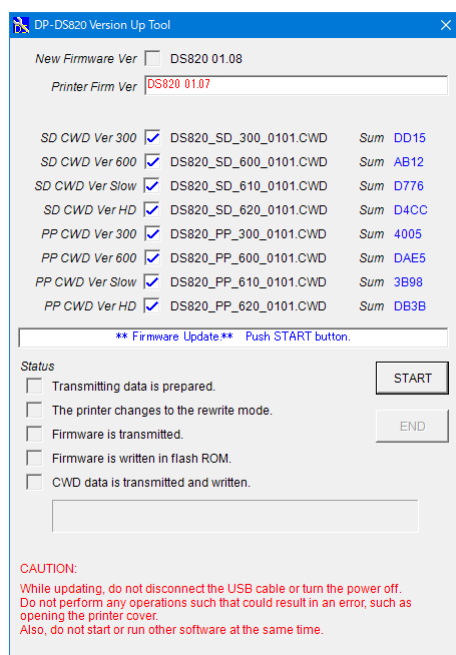
 If the error window is displayed, see Appendix A-1 or A-2.

 If the Printer setting window is displayed, see Appendix A-3.

A confirmation screen that allows you to run this software may appear. In that case, please allow it.

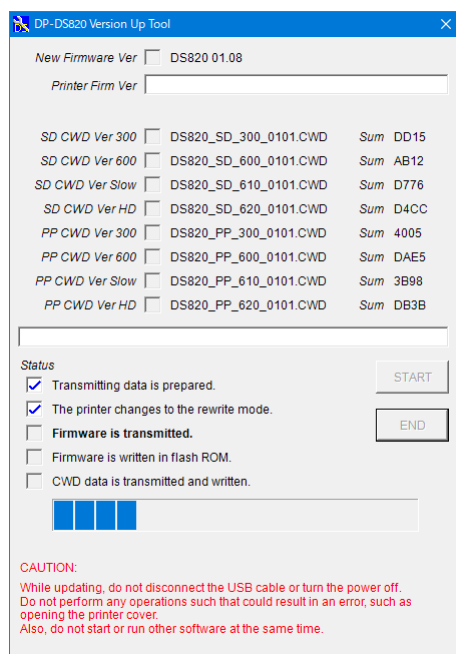
2 Starting the Update

On the DP-DS820 Version Up Tool window, click the “START” button to begin the update.



IF If the DP-DS820 occurs any error, the error message is displayed. See Appendix A-4.

When you click “START” and start the update, the window display will change to the following, and you can check the update progress status.



! Notice !

While updating, do not disconnect the USB cable or turn the power off.
Do not perform any operations such that could result in an error, such as opening the printer cover.
Also, do not start or run other software at the same time.

When the printer enters the rewrite mode, the LED will change from green to flashing green.
(The printer buzzer sounds during the update, but it is normal status.)

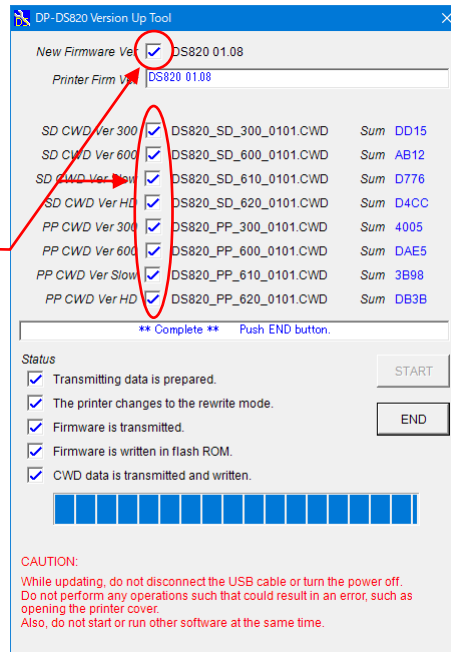
3. Finishing the update

When all the updates are complete, the window display will look like the following.

Also, the printer LED will revert from flashing green to green.

Confirm the New Firmware and New CWD Ver boxes are checked, and click the “END” button or close the window to end DP-DS820 Version Up Tool.

Confirmation



When all the updates are completed, reboot the host computer.

When the host computer is not rebooted, the new function might not be able to be used.

4. Perform “Paper Initialization” of the DP-DS820

Reload the paper with the power on to adjust the ribbon sensor balance.



The copyrights for this document are the property of the holders of rights.



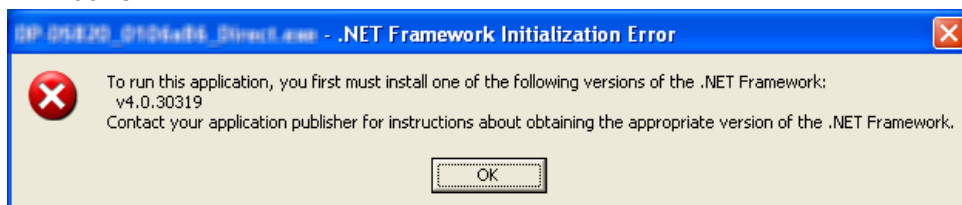
The contents of this document may be changed without prior notice.

Note: Windows is a trademark or registered trademark of Microsoft Corporation in the U.S. and/or other countries.

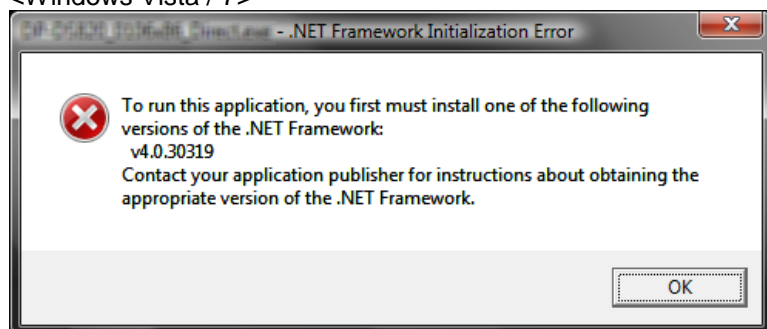
Appendix A

1. If .NET Framework is not installed in the host computer, error messages are displayed.
For supporting 32/64bit OS, this Version Up Tool is an application which use .NET Framework. When the start of this tool by XP/Vista/7 and the following message are displayed, it is necessary to install Microsoft.Net Framework. (In Windows 8 and later, the .Net Framework 4 is installed by the standard.)

<Windows XP>



<Windows Vista / 7>

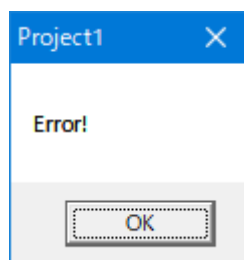


.Net Framework can be downloaded from following URL. The version that can be used is different depending on each OS. Details are described in URL. (This URL is a thing as of February 2021)

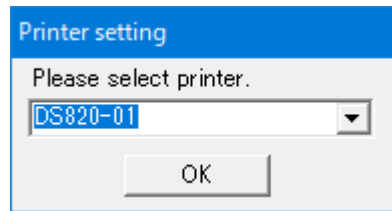
.Net Framework 4 download (Windows XP and later)

<https://www.microsoft.com/en-us/download/confirmation.aspx?id=17718> (English)

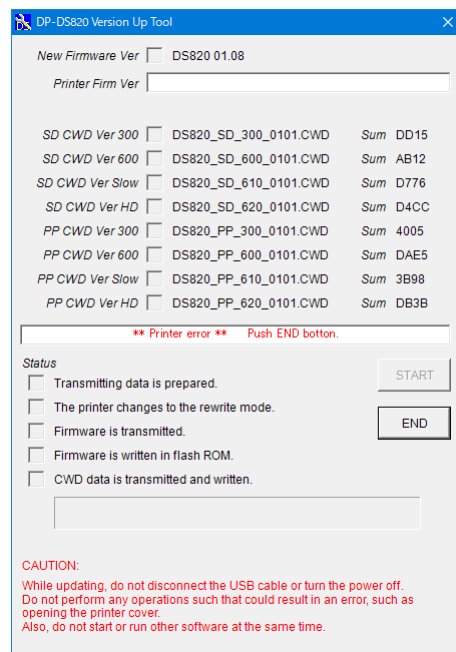
2. If there are no printer ports, the following confirmation window will open.
After checking that power is on and the USB is connected, click "OK" to start the process again.



3. When running DP-DS820 Version Up Tool, if there are multiple printer ports, the following printer select window will open.
Select the DP-DS820, and click “OK”.
When updating multiple DP-DS820 units, execute them one by one.



4. When starting the update, if the printer has error, the following printer error will be displayed. The same error will be shown if the USB cable is disconnected or the printer power is off.



If there is an error, click “END” or close the window to stop DP-DS820 Version Up Tool, fix the error, be sure there are no errors (printer LED is green), and run DP-DS820 Version Up Tool again.
If the USB cable was disconnected or the power was off, check that the USB cable is connected and the power is turned on.

Appendix B

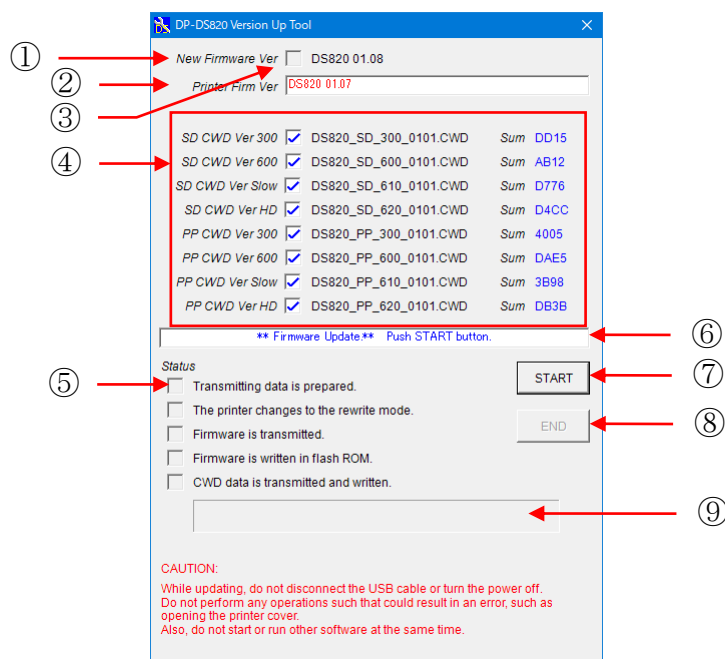
1. DP-DS820 Version Up Tool Execute File Names

The DP-DS820 Version Up Tool has a specific execute file for each version to be updated.

The execute file names provided with the DP-DS820 Version Up Tool this time, and their corresponding update firmware and color control data versions are shown below.

	For 32bit OS	For 64bit OS
DP-DS820 Version Up Tool Execute File Name	DP-DS820_0108x86_Direct.exe	DP-DS820_0108x64_Direct.exe
Firmware Version	DS820 01.08	
Color Control Data Version and Checksum	DS820_SD_300_0101.CWD DD15 DS820_SD_600_0101.CWD AB12 DS820_SD_610_0101.CWD D776 DS820_SD_620_0101.CWD D4CC DS820_PP_300_0101.CWD 4005 DS820_PP_600_0101.CWD DAE5 DS820_PP_610_0101.CWD 3B98 DS820_PP_620_0101.CWD DB3B	

DP-DS820 Version Up Tool Window Explanation



DP-DS820 Version Up Tool Window

- | | |
|------------------------------------------------------------------------------------------------------------------------------------------------|---------------------------------------------------------------------------------------------------------------------------------------------------------------------------------------------------------------------------------------------------------------------------------------------------------------------------------------------------------------------------------------------------------------------------------------------------------------------------------------------------------------------------------------------------------------------------------------------------------------------------------------------|
| ① New Firmware | This displays the new firmware version that will be used in the update. |
| ② Printer Firm Ver | This displays the printer's current firmware version.
If it differs from the new version, it will be displayed with red letters. |
| ③ Check Box | This box will have a check if the new firmware or color control data has already been written to the printer, or if the update has been completed. |
| ④ SD CWD Ver 300
SD CWD Ver 600
SD CWD Ver Slow
SD CWD Ver HD
PP CWD Ver 300
PP CWD Ver 600
PP CWD Ver Slow
PP CWD Ver HD | <p>This displays the new color control data version and checksum value (Sum) to be updated.
When the update is complete, the Sum value will be displayed in blue.</p> <p>SD CWD Ver 300 : CWD for Digital media 300dpi
 SD CWD Ver 600 : CWD for Digital media 600dpi
 SD CWD Ver Slow : CWD for Digital media Slow Speed
 SD CWD Ver HD : CWD for Digital media High Density
 PP CWD Ver 300 : CWD for Pure Premium media 300dpi
 PP CWD Ver 600 : CWD for Pure Premium media 600dpi
 PP CWD Ver Slow : CWD for Pure Premium media Slow Speed
 PP CWD Ver HD : CWD for Pure Premium media High Density</p> |
| ⑤ Status | This checks the progress status for the update. |
| ⑥ Indicator | This shows the printer's current status, and the application operating command. |
| ⑦ START | Update start button
Clicking this button starts the update. |
| ⑧ END | End the update. (Disabled during updating) |
| ⑨ Status Bar | Displays the progress status for the update. |